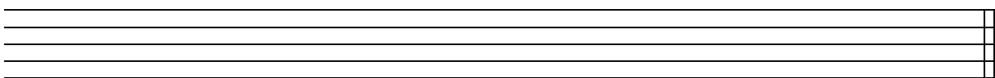
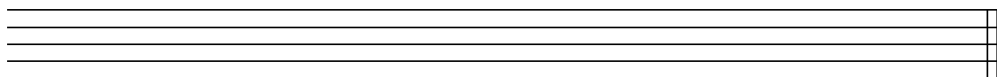


Schreiben Sie folgenden Tonleitern

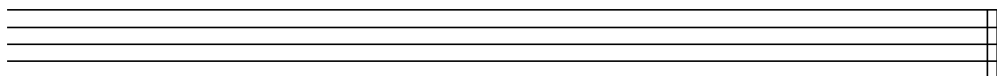
1. Chromatik von d''' nach d''



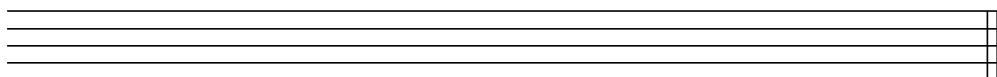
2. g-Moll harmonisch von g



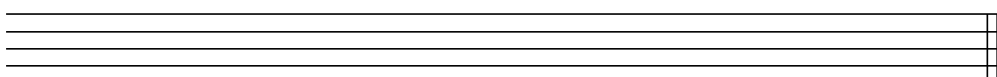
3. Ganztonleiter von as



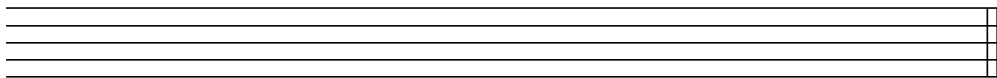
4. Chromatik von gis nach gis'



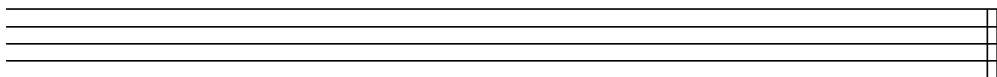
5. Ges-Dur von ges



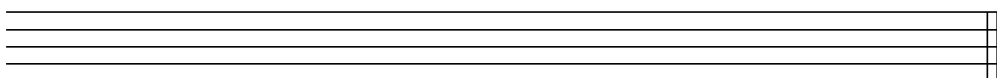
6. harmonisches Moll von h'



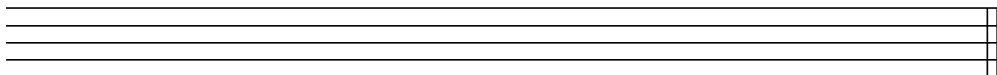
7. reines Moll von b



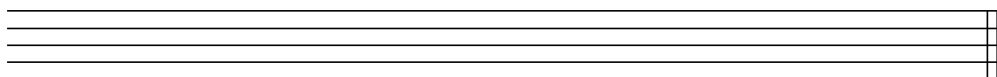
8. Ganztonleiter ais'' - ais'



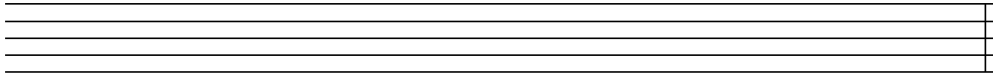
9. Pentatonik von e'



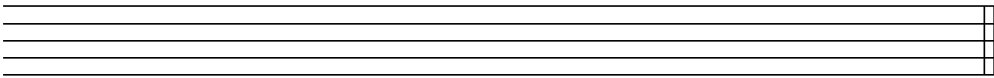
10. harmonisches Moll von c'



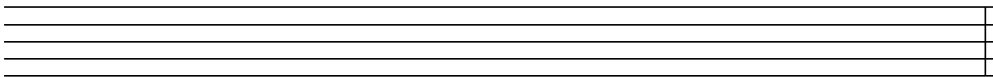
11. E-Dur von e''



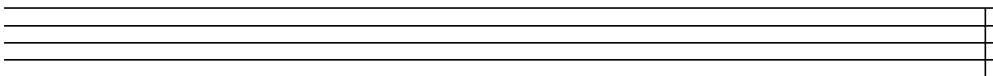
12. Ganztonleiter von fis



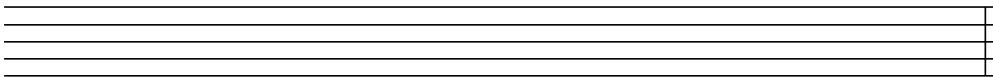
13. Pentatonik von des'



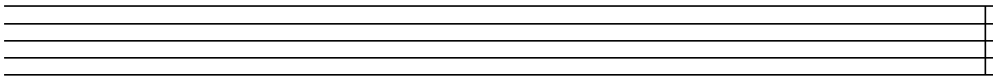
14. harmonisches Moll von fis'



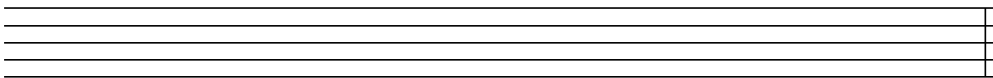
15. Fis-Dur von fis'



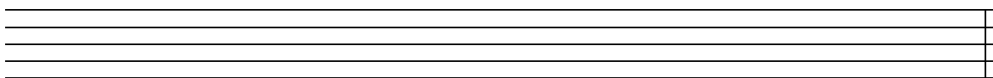
16. reines cis-Moll von cis''



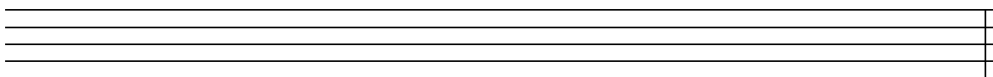
17. f-Moll harmonisch von f



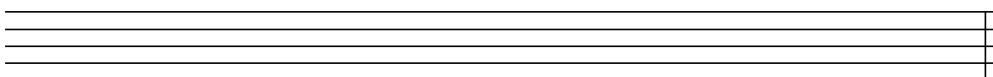
18. Cis-Dur von cis'



19. a-Moll harmonisch von a



20. gis-Moll harmonisch von gis



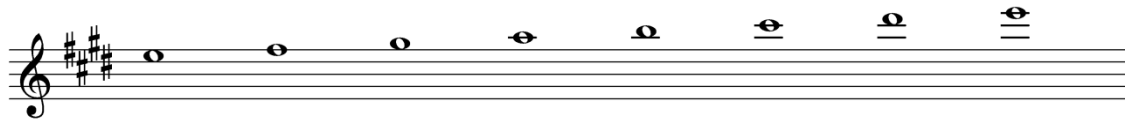
**Welche Tonleitern hören Sie?**

**Dur, Chromatik, Ganzton und Pentatonik:**  
<http://www.musictheory.net/exercises/ear-scale/by4ryyy>

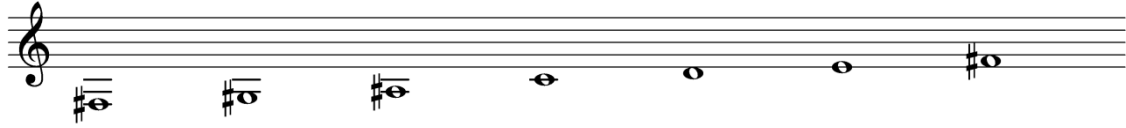
**Dur, reines und harmonisches Moll:**  
<http://www.musictheory.net/exercises/ear-scale/8yyryyy>



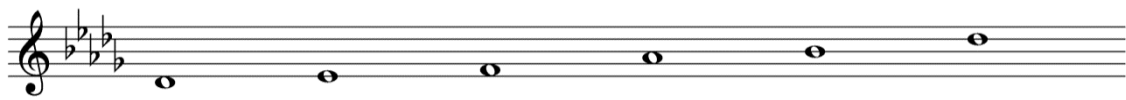
11. E-Dur von e''



12. Ganztonleiter von fis



13. Pentatonik von des'



14. harmonisches Moll von fis'



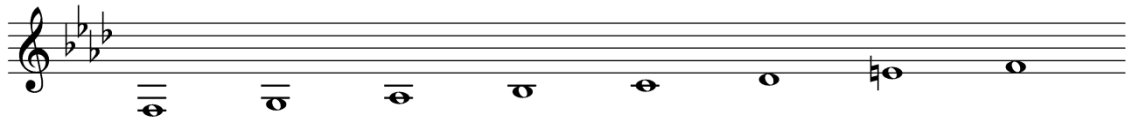
15. Fis-Dur von fis'



16. reines cis-Moll von cis''



17. f-Moll harmonisch von f



18. Cis-Dur von cis'



19. a-Moll harmonisch von a



20. gis-Moll harmonisch von gis

